

**Product Name**

Mouse Anti-Salmonid Immunoglobulin  
 Horseradish Peroxidase Conjugated Monoclonal Antibody

**CAT**

CC0006H

**No.****LOT No.**

28138C

**Quantity**

100µg



orders@immunoprecise.com

www.immunoprecise.com

**Reconstitution**

Restore with 100uL of deionized water.  
 Centrifuge product if not completely clear after standing at room temperature

**Immunogen**

Rainbow Trout and Atlantic Salmon heavy and light chain immunoglobulins

**Specificity**

Oncorhynchus and Salvelinus serum immunoglobulins

**Stability**

+4°C (stable for one year after reconstitution)

**Host/Isotype**

IgG2a / mouse

**Clone**

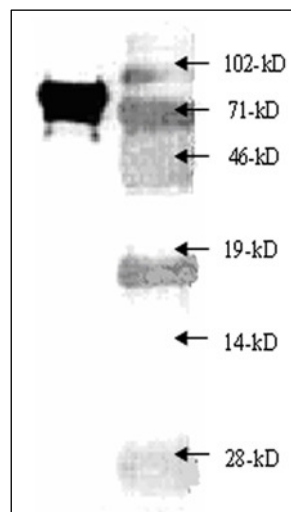
5F12

**Suggested Dilution**

1/500 – 1/1000 (ELISA)

1/400 – 1/800 (WB)

Optimal titers for applications should be determined by the researcher

**Sample Data**

Western blot of Atlantic salmon immune serum showing a large H chain band at approximately 71-kD as detected by IPA006H antibody. Molecular weight markers are indicated on the right.

**Applications**

Suitable for immunoblotting (western or dot blot), ELISA, and Immunohistochemistry

**Formulation**

Protein G purified, HRPO conjugated, in PBS pH 7.2 with 10 mg/mL BSA as stabilizer and 0.01% (w/v) Gentamicin sulfate as preservative

**Species Cross Reactivity***Salmo*

Atlantic +

Salmon Brown +

Trout

*Onchorhynchus*

Chinook +

Salmon Chum +

Salmon +

Coho Salmon +

Sockeye Salmon +

Rainbow Trout

*Salvelinus*

Arctic Char +

Brook Trout +

**Negative Controls:**

China Perch, Zebra Fish -

**Background**

This mouse monoclonal anti-salmonid immunoglobulin antibody recognizes a variety of heavy chain epitopes on several *Salmonid* species. As a result, this antibody represents a powerful tool for the indirect detection of clinically and economically important salmonid parasites; parasite-specific immunoglobulins from *Salmo*, *Onchorhynchus* and *Salvelinus* may react with our monoclonal anti-salmonid (H-chain) Ig antibodies. This antibody can be used to monitor levels of serum immunoglobulins in salmon stock, and responses to specific parasites, or to assess the efficacy of salmonid vaccines.