

**Product Name**  
Monoclonal Mouse  
anti-VSV-tag,  
Immunoglobulin, clone  
P5D4

**CAT No.**  
MQ 20.101-100

**LOT No.**  
TD20.101-100-0516-09

**Quantity**  
100 µg

Edition: October 7<sup>th</sup>, 2014

**Intended use**

This product is for research use only. NOT for use in diagnostic or therapeutic procedures.

This product is tested for use in immunoprecipitation (IP), immunohistochemistry (IHC), enzyme-linked immunosorbent assay (ELISA) and Western Blot (WB).

**Reagent provided**

The antibody has been lyophilized in a 10 mM ammonium bicarbonate buffer.

**Isotype**

Mouse IgG1, κ

**Immunogen**

VSV-tagged protein.

**Specificity**

Specificity has been tested in ELISA (figure 1). Recognizes VSV-tagged proteins.

**Purity**

Protein A purified.

**Precautions**

1. For professional users.
2. As with any product derived from biological sources, proper handling procedures should be used.
3. The product may be used in different techniques and in combination with different sample types and materials, therefore each individual laboratory should validate the applied test system.

**Preparation of the antibody**

- Recommended antibody concentration: 0.5 mg/ml
- Recommended solvent; 100 mM PBS or Tris-HCl, pH 7.0
- Additional sodium azide (up to 0.05%) is recommended for prolonged storage
- For a 0.5 mg/ml antibody concentration, dissolve in 200 µl buffer

**NOTE:** Be careful opening the vial since the antibody resides in a vacuum.

**Storage instructions**

For long term storage keep lyophilized batch at -20°C  
After dissolving store at 2-8°C. For prolonged storage add sodium azide to 0.05%

**Application guidelines**

ELISA: 0.5 – 10 µg/ml



orders@immunoprecise.com  
www.immunoprecise.com

Other applications: since applications vary, you should determine the optimum working dilution of the product that is appropriate for your specific need.

Unless the stability in the actual test system has been established, it is recommended to dilute the product immediately before use.

**Relevance**

This antibody is developed for the detection of VSV-tagged

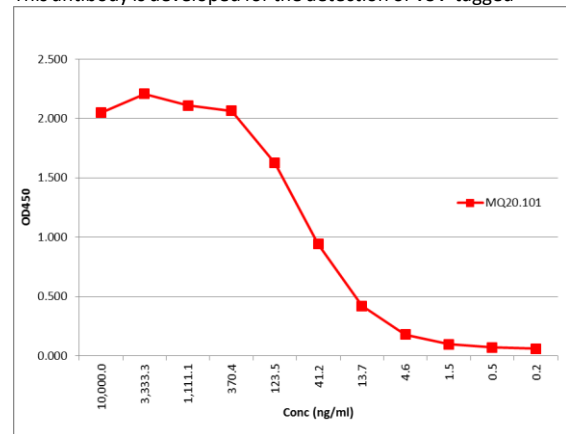


Figure 1: ELISA analysis of MQ20.101. Antibody diluted in PBS containing 0.05% tween-20 and 1% BSA was tested on a VSV-tagged single chain antibody.