

**Product Name**  
Monoclonal Mouse  
Anti-Collagenase from *Clostridium histolyticum*,  
Immunoglobulin, clone 7H43F2-12092

**CAT No.**  
MQ 5.202-100

**LOT No.**  
12092

**Quantity**  
100 µg

Edition: March 20<sup>th</sup>, 2013

#### Intended use

This product is for research use only. NOT for use in diagnostic or therapeutic procedures.  
This product is tested for use in enzyme-linked immunosorbent assay (ELISA) and Western Blot (WB).

#### Reagent provided

The antibody is supplied in PBS, pH 7.2 + 50 mM Tris, pH 8.5  
Antibody concentration: 0.68 mg/ml

#### Immunogen

Collagenase from *Clostridium histolyticum*, type H (Sigma-Aldrich, C8051).

#### Specificity

Specificity has been tested in ELISA (figure 1) and WB (figure 2). Additional tests for cross reactivity have not yet been performed.

#### Purity

Protein A purified.

#### Precautions

1. For professional users.
2. As with any product derived from biological sources, proper handling procedures should be used.
3. The product may be used in different techniques and in combination with different sample types and materials, therefore each individual laboratory should validate the applied test system.

#### Preparation of the antibody

Use antibody as supplied.

#### Storage instructions

Store at <-20°C.

#### Dilution guidelines

ELISA: 1:200 – 1:1000

WB: 1:2000 – 1:5000

Unless the stability in the actual test system has been established, it is recommended to dilute the product immediately before use.

#### Relevance

This Collagenase is typically used with a neutral protease for tissue disruption.

**ImmunoPrecise**

orders@immunoprecise.com  
www.immunoprecise.com

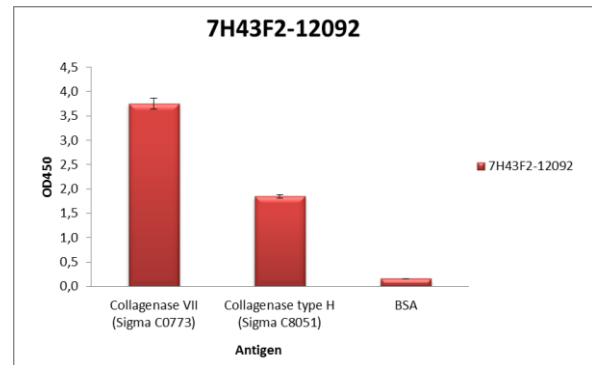


Figure 1: Specificity of Anti-Collagenase from *clostridium histolyticum* type H (Sigma-Aldrich, C8051) Immunoglobulin, clone 7H43F2-12092, determined by ELISA. Antibody fraction (0.68 mg/ml) 200X diluted in PBS containing 0,05% tween-20 and 5% BSA. Antibody was tested on various substrates i.e. collagenase VII (Sigma-Aldrich, C0773), collagenase type H (Sigma-Aldrich, C8051), and BSA, 98% (Sigma).

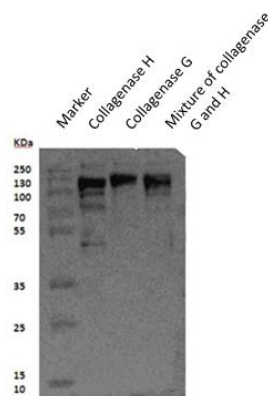


Figure 2: Specificity of Anti-Collagenase MQ5.202 (from *clostridium histolyticum* type H, Sigma-Aldrich, C8051) Immunoglobulin, clone 7H43F2-12092, determined by western blot. Antibody fraction (0.68 mg/ml) was used 5000X diluted. Antibody was tested on various substrates i.e. collagenase G, and collagenase type H.