

Product Name

Monoclonal Mouse Anti- Acetylated lysine peptide Immunoglobulin, clone 15F10

CAT No.

MQR 1.1001-100

LOT No.

14209

Quantity

100 µg

Edition: January 27th, 2015

Intended use

This product is for research use only. NOT for use in diagnostic or therapeutic procedures.

This product is tested for use in enzyme-linked immunosorbent assay (ELISA).

Reagent provided

The antibody is supplied in PBS, pH 7.2
Antibody concentration: 0,66 mg/ml

Isotype

Mouse IgG2a

Immunogen

Acetylated N-terminal Histon 2a peptide.

Specificity

Specificity has been tested in ELISA (figure 1).

Purity

Protein A purified.

Precautions

1. For professional users.
2. As with any product derived from biological sources, proper handling procedures should be used.
3. The product may be used in different techniques and in combination with different sample types and materials, therefore each individual laboratory should validate the applied test system.

Preparation of the antibody

Use antibody as supplied.

Storage instructions

Store at -20 °C.

Application guidelines

ELISA: 0.02 - 0.5 µg/ml

Unless the stability in the actual test system has been established, it is recommended to dilute the product immediately before use.

Relevance

Acetylation is a post-translational modification controlling protein activity. Acetylation of histones, by Histone Acetyltransferases (HATs), is part of the gene regulation process. Furthermore, acetylation of lysine containing proteins affects protein synthesis, protein localization, metabolism, apoptosis, protein stability etc.



orders@immunoprecise.com
www.immunoprecise.com

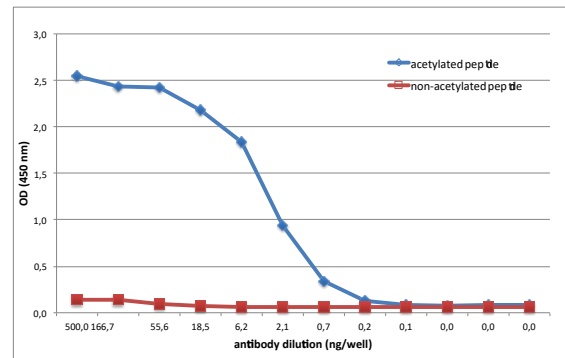


Figure 1: Specificity of MQR1.1001, clone 19D12, determined by ELISA. Antibody was diluted in PBS containing 0.05% tween-20 and 1% BSA and was tested on a phosphorylated and non-phosphorylated peptide.