

**Product Name**  
Monoclonal Human  
Anti-Bromodomain-containing protein 1 (BRD1)  
immunoglobulin

**CAT No.**  
MQR 2.1501

**LOT No.**  
16219

**Quantity**  
100 µg

Edition: May 30, 2017

**Intended use**

This product is for research use only. NOT for use in diagnostic or therapeutic procedures.  
This product is tested for use in enzyme-linked immunosorbent assay (ELISA) and immunoprecipitation (IP).

**Reagent provided**

The antibody is supplied in PBS

**Isotype**

Human IgG1κ

**Immunogen**

Bromodomain-containing protein 1 (PWWP domain, 925-1049 of 1058

**Specificity**

Specificity has been tested in ELISA (figure 1) and in IP-MS.

**Purity**

Protein A purified.

**Precautions**

1. For professional users.
2. As with any product derived from biological sources, proper handling procedures should be used.
3. The product may be used in different techniques and in combination with different sample types and materials, therefore each individual laboratory should validate the applied test system.

**Preparation of the antibody**

Use antibody as supplied.

**Storage instructions**

Store at -20°C.

**Application guidelines**

ELISA: 1:25000

IP: 2 µg/ml

Unless the stability in the actual test system has been established, it is recommended to dilute the product immediately before use.

**Relevance**

Component of the MOZ/MORF complex which has a histone H3 acetyltransferase activity.<sup>1</sup>



orders@immunoprecise.com  
www.immunoprecise.com

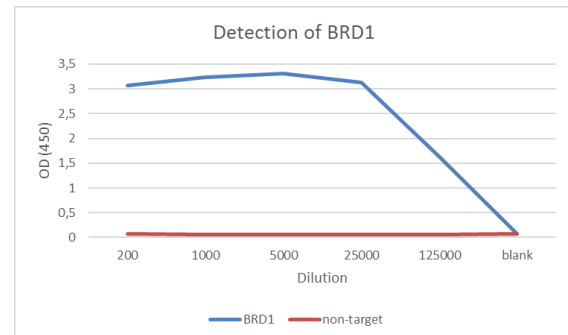


Figure 1: Specificity of BRD1 (MQR2.1501), determined by ELISA. Antibody diluted in PBS containing 0.05% tween-20 and 1% BSA was tested on human BRD1 and BRPF3 (non-target).

**References**

- 1) UniProt Consortium 2017, 'Bromodomain-containing protein 1', UniProtKB Protein Knowledgebase, viewed 12 May 2017, <http://www.uniprot.org/uniprot/O95696>