



orders@immunoprecise.com  
www.immunoprecise.com

**Product Name**

Monoclonal Human anti-IL8 Immunoglobulin

**CAT No.**

MQR 2.4401

**LOT No.**

18313

**Quantity**

100 µg

Edition: September 11, 2019

**Intended use**

This product is for research use only. NOT for use in diagnostic or therapeutic procedures.

This product is tested for use in enzyme-linked immunosorbent assay (ELISA).

**Reagent provided**

The antibody is supplied in PBS.

**Isotype**

Human IgG1κ

**Immunogen**

Interleukin-8. Domain 28-99 of 99 (1-20 signal peptide, CPR 21-99).

**Specificity**

Specificity has been tested in ELISA (figure 1).

**Purity**

Protein A purified.

**Disclaimer**

The antibody is for R&D use only. NOT for use in diagnostic or therapeutic procedures.

**Precautions**

1. For professional users.
2. As with any product derived from biological sources, proper handling procedures should be used.
3. The product may be used in different techniques and in combination with different sample types and materials, therefore each individual laboratory should validate the applied test system.

**Preparation of the antibody**

Use antibody as supplied.

**Storage/Stability**

Store at -20°C. After first time use, store at 4°C. Avoid repeated freeze-thaw cycles.

**Application guidelines**

ELISA: 1:1000 – 1:5000

Other applications: since applications vary, optimum working dilution of the product should be determined in the appropriate assay.

Unless the stability in the actual test system has been established, it is recommended to dilute the product immediately before use.

**Relevance**

IL-8 is a chemotactic factor that attracts neutrophils, basophils, and T-cells, but not monocytes. It is also involved in neutrophil activation. It is released from several cell types in response to an inflammatory stimulus. IL-8(6-77) has a 5-10-fold higher activity on neutrophil activation, IL-8(5-77) has increased activity on neutrophil activation and IL-8(7-77) has a higher affinity to receptors CXCR1 and CXCR2 as compared to IL-8(1-77), respectively.<sup>1</sup>

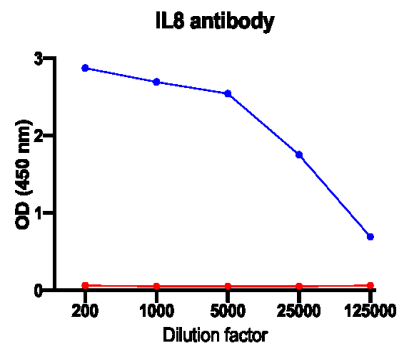


Figure 1: Specificity of anti-IL8 (MQR2.4401), determined by ELISA. Antibody stock 1.28 mg/ml diluted in PBS containing 0.05% tween-20 and 1% BSA was tested on human interleukin-8 (in blue) and non-target protein (in red).

**References**

- 1) <https://www.uniprot.org/uniprot/P10145>